



DESMOL

WOOD AND METALLIC PLANK MOULD REMOVER, EMULSIFIABLE WITH WATER

It is an efficient oily plank mould remover which is based in mineral refined oils, emulsifiable with water and it has been especially additivated. DESMOL gives an excellent finish to the surfaces removed from its plank moulds, and it also allows lengthening mould duration. It avoids concrete adherence on plank moulds.

USES

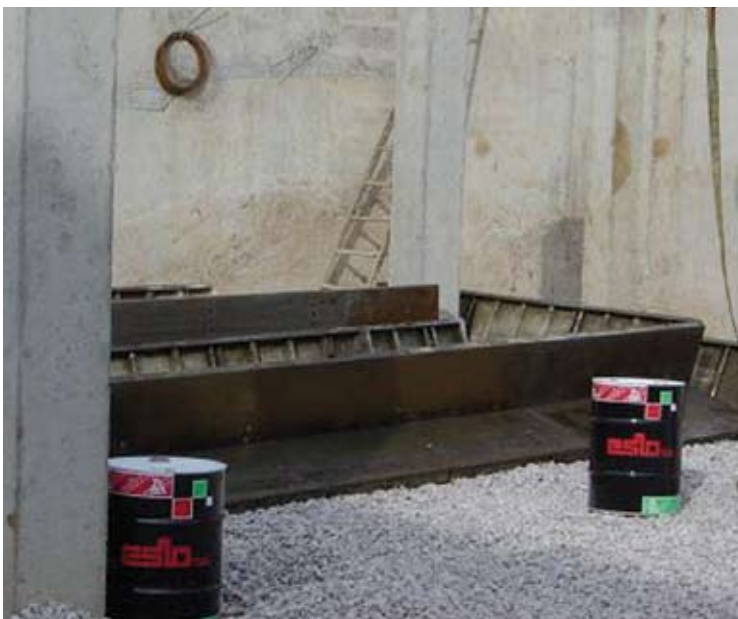
DESMOL is a concrete plank mould remover in structures and prefabricated concrete pieces, metallic moulds, plaster, plastics and wood.

SURFACE PREPARATION

Before its application it is better to clean the remainders of whitewash.

INSTRUCTIONS FOR USE

DESMOL can be applied with spray, brush, and paintbrush or by immersion.



CONSUMPTION

DESMOL is used emulsified with water at most 1:20. The performance of the product is 40-50 m²/litre.

COLOUR

Slightly brown.

PACKING AND STORING

DESMOL is packed in hermetic barrels; according to EC packing and storing directives for chemical products.



HYGIENE AND SAFETY

See product label.

Specifications	
Stability emulsión (20%):	Stable 2 hours
Aspect:	Oily liquid
Colour:	Amber
Density:	0,90 g/cm ³
Viscosity (A2, V50, 25°C):	< 1000 cP
Active material:	100%
Solubility:	Emulsionable in water
PH:	8,0 ± 1,0
Refraction index:	1,472 ± 0,005